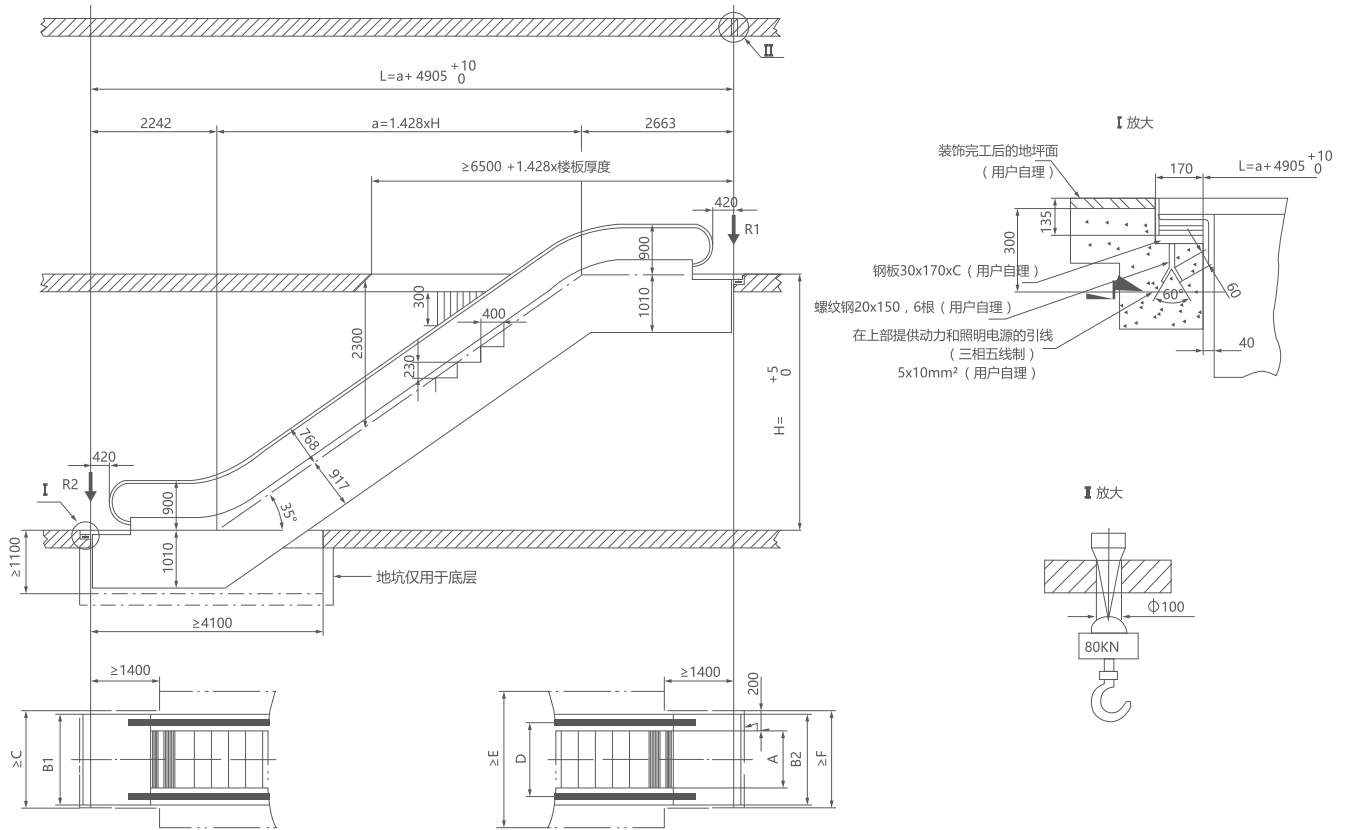


### 35度自动扶梯土建图



### 参数表

规格	型号	BOF 1000 - 35 - 600 (4500p/hour)				BOF 1000 - 35 - 800 (6750p/hour)				BOF 1000 - 35 - 1000 (9000p/hour)			
		NW(KN)	R1(KN)	R2(KN)	P(KN)	NW(KN)	R1(KN)	R2(KN)	P(KN)	NW(KN)	R1(KN)	R2(KN)	P(KN)
3000		54	43	39	5.5	56	49	44	5.5	60	56	50	5.5
3500		57	43	41	5.5	60	52	47	5.5	64	60	53	8
4000		60	49	44	5.5	63	56	50	5.5	67	64	57	8
4500		64	52	46	5.5	66	59	53	8	71	67	60	8
5000		67	54	49	8	70	62	56	8	74	71	64	11
5500		70	57	51	8	73	65	59	8	82	77	69	11
6000		73	60	54	8	76	69	61	8	85	81	72	11

型号	A	B1	C	D	E	F	B2
BOF 1000 - 35 - 600	600	1140	1200	838	1838	1200	1140
BOF 1000 - 35 - 800	800	1340	1400	1038	2038	1400	1340
BOF 1000 - 35 - 1000	1000	1540	1600	1238	2238	1600	1540